

Winter Gardens

Michael Bomford
Kentucky State University



Cool-season crops

(frost tolerant, heat intolerant, happy at 60°F)

- Beets
- Broccoli
- Cabbage
- Carrots
- Cauliflower
- Chard
- Kale
- Kohlrabi
- Lettuce
- Mustard greens
- Parsley
- Parsnips
- Peas
- Radish
- Rutabagas
- Spinach
- Turnips







6 10:06 AM

9/24/2005



12/7/2005



12/7/2005



12/7/2005



1/18/2006



2/05/2006



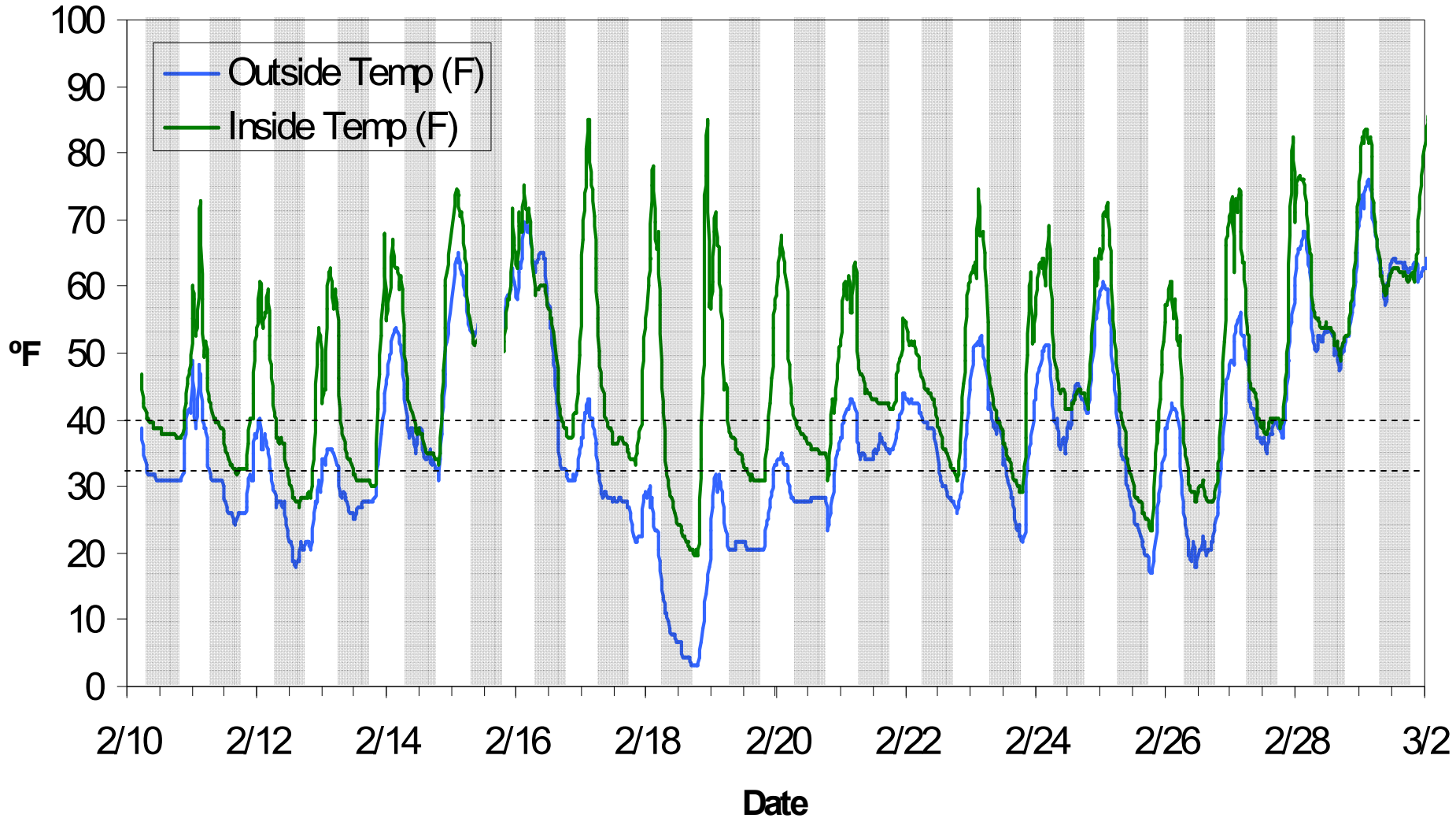
2/05/2006



3/02/2006



High tunnel temperatures



3/22/2006



5/08/2006



8/14/2006

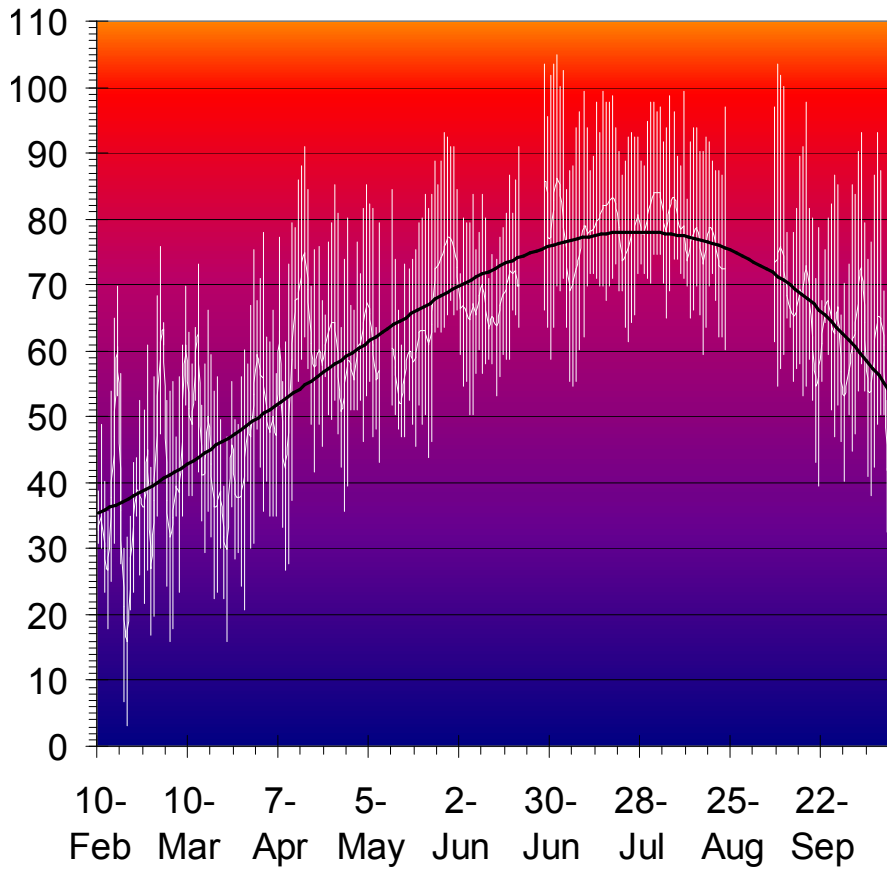


10/4/2006

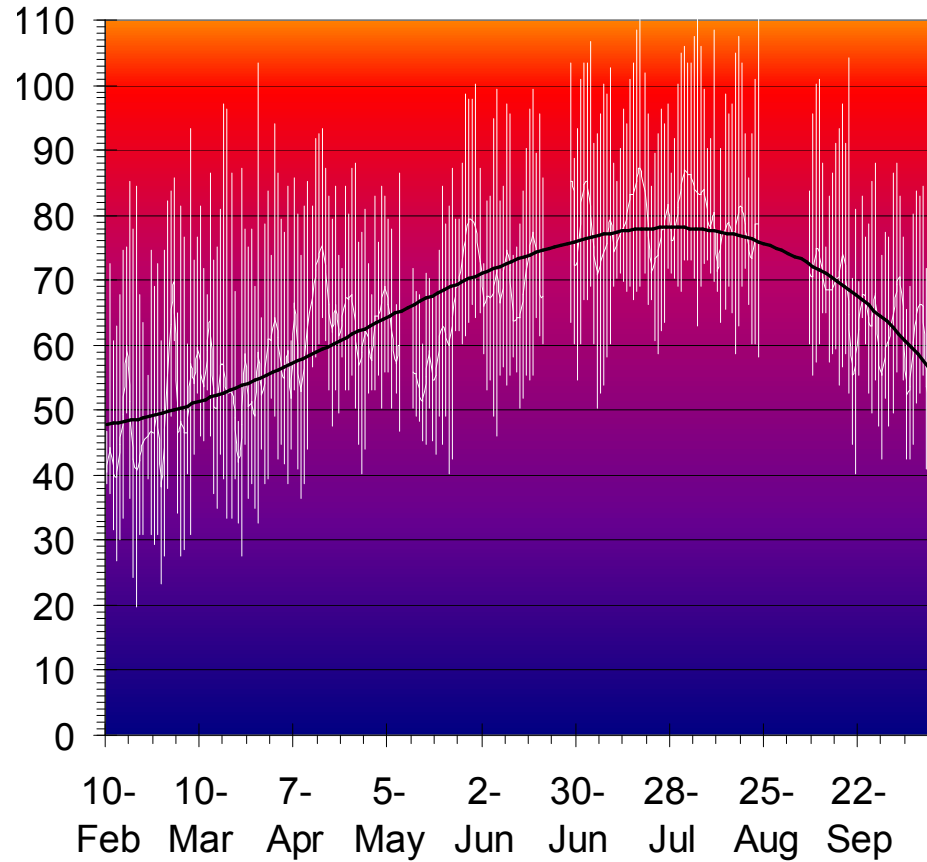


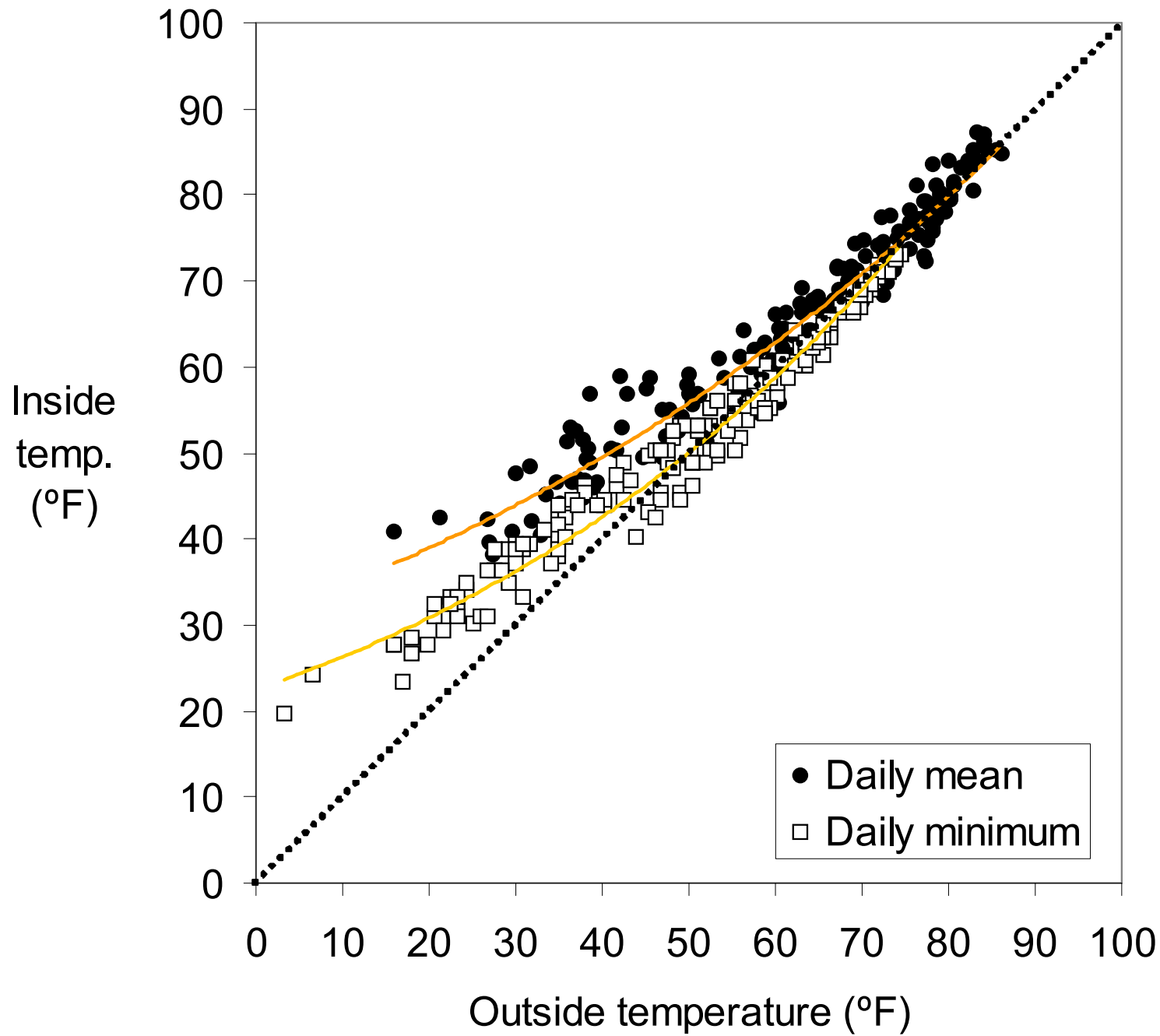
KSU High tunnel temperature record

Outside temp. (°F)



Inside temp. (°F)



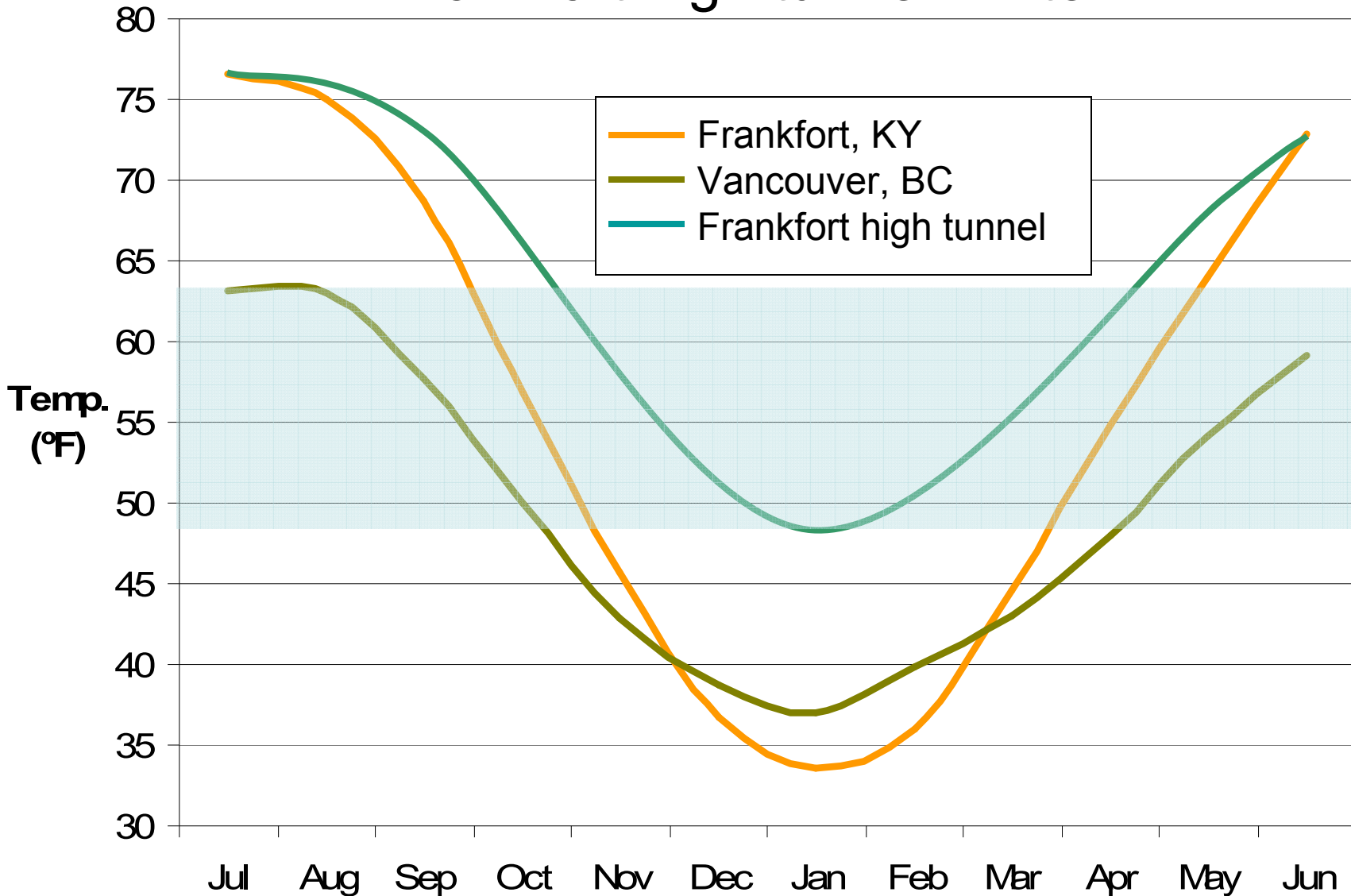




Vancouver summer

=

Frankfort high tunnel winter



Western Lettuce Now Inc., Langley BC



6 acres

8 acres

Wiediger
high
tunnel

Image © 2005 MDA EarthSat

Image © 2005 DigitalGlobe

© 2005

Streaming | 100%

Pointer: 49°07'51.86" N 122°36'46.55" W elev: 59 ft



Western Lettuce

- Bibb lettuce
- 12-18 plants / m²
- 12 weeks, seed to harvest
- 8 crops / year
- Hydroponic, tabletop
- Steel frame
- Single pane of glass
- Natural gas boiler heat

Yoshihiko Wada, PhD
Professor of Ecological Economics
Doshisha University,
Kyoto, Japan



1.6 acres

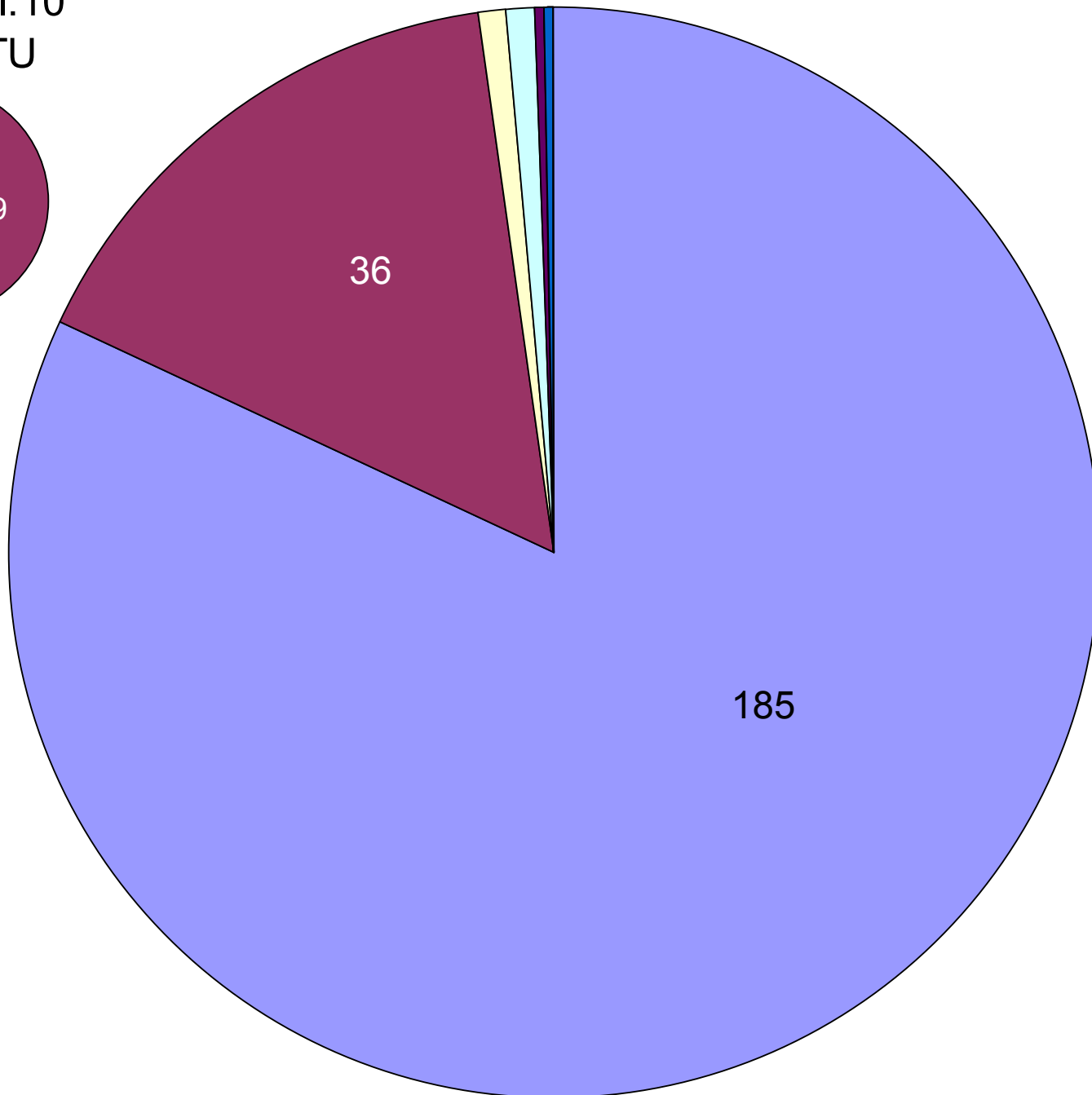
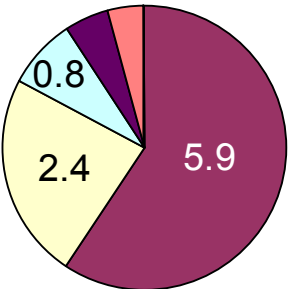


Au Naturel Farm

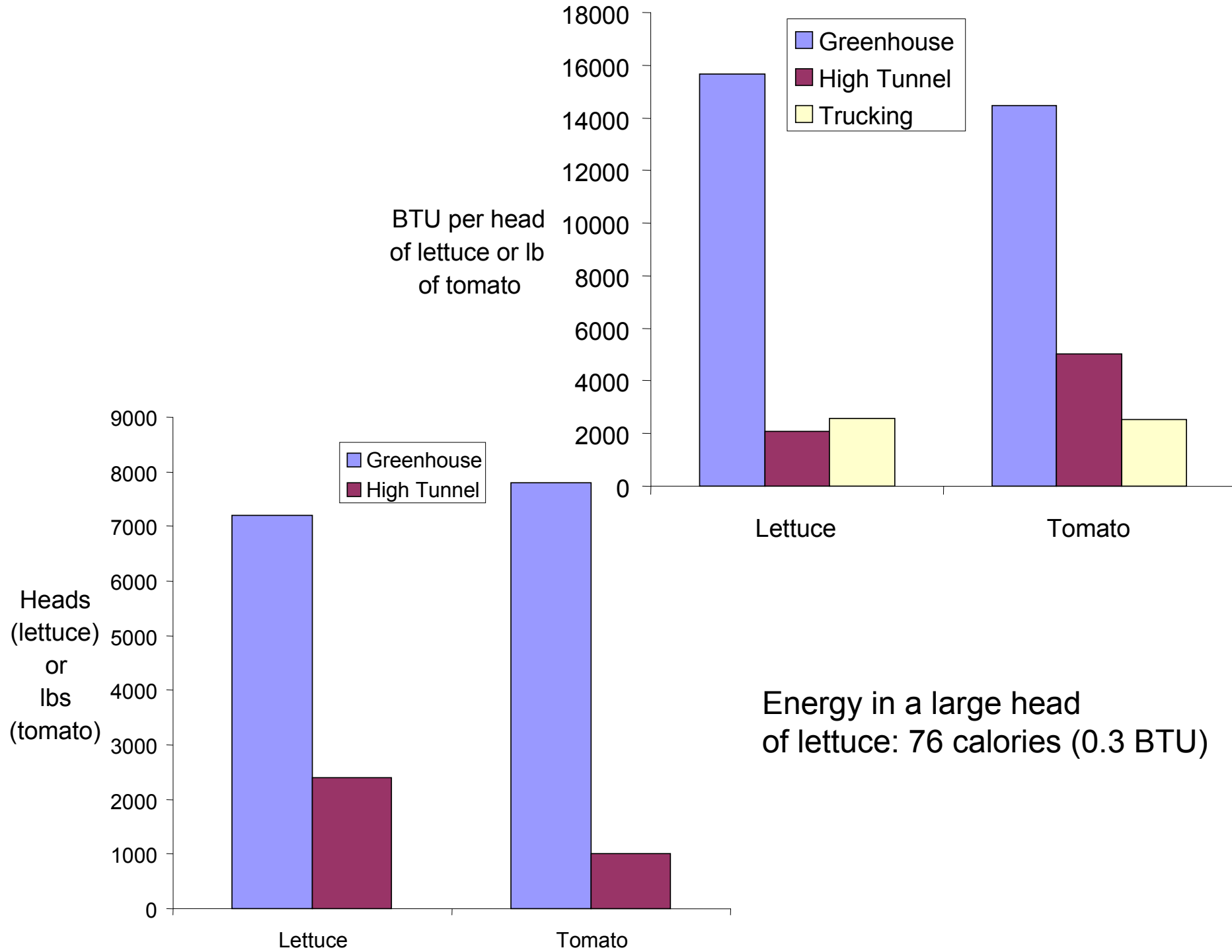
- Mixed varieties
- 9 plants / m²
- 10 weeks, seed to harvest
- 3 crops per winter
- Soil-based system
- Steel, wood frame
- Double layer plastic
- Solar heat only

Greenhouse: 225 million BTU per 1,200 sq. ft.

High tunnel: 10 million BTU



- natural gas
- electricity
- plastic
- steel
- aluminum
- wood
- glass
- concrete









98 4 23



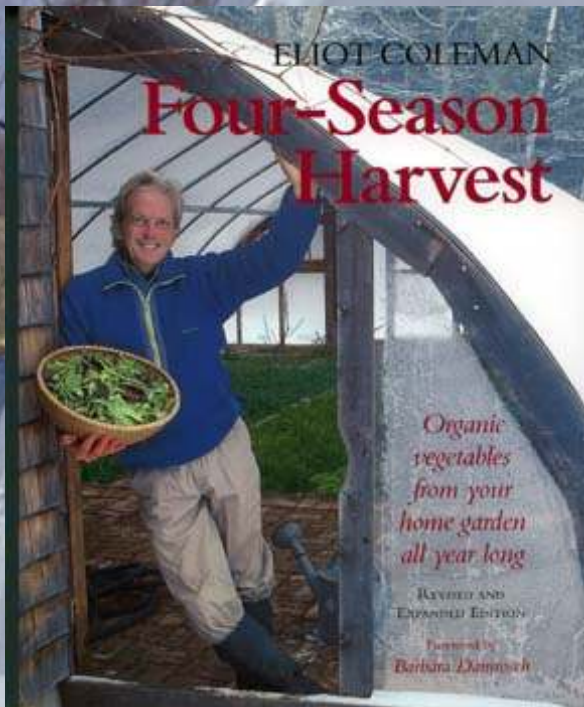






Recommended Reading

- <http://organic.kysu.edu/Tunnel.html>
- Elliott Coleman, *Four-Season Harvest*



Contact me:
michael.bomford@kysu.edu